



Government of India
Ministry of Earth Sciences



India Meteorological Department

PRESS RELEASE-6

Time of issue: 1430 hours IST

Dated: 13th September, 2024

**Sub: (a) Well Marked Low Pressure Area over northwest Uttar Pradesh & neighborhood
(b) Well Marked Low Pressure Area over northeast Bay of Bengal and adjoining southeast Bangladesh coast**

(a) Well Marked Low Pressure Area over northwest Uttar Pradesh & neighborhood

Yesterday's Depression over Southwest Uttar Pradesh and neighbourhood moved north-northeastwards and weakened into a well marked low pressure area over northwest Uttar Pradesh & neighborhood in the morning (0830 hours IST) of today, the 13th September.

It is likely to weaken further into a low pressure area during next 12 hours.

Warnings:

(i) Rainfall warning

Uttarakhand: Light to moderate rainfall at most places is very likely with **heavy to very heavy rainfall** at a few places and **extremely heavy rainfall** at isolated places on 13th and **heavy rainfall** at isolated places on 14th September.

Himachal Pradesh: Light to moderate rainfall at most places is very likely with **heavy rainfall** at isolated places on 13th September.

Uttar Pradesh: Light to moderate rainfall at most places is very likely with **heavy to very heavy rainfall** at isolated places on 13th and **heavy rainfall** at isolated places on 14th September.

Haryana: Light to moderate rainfall at isolated places is very likely with **heavy rainfall** at isolated places on 13th & 14th September.

(ii) Flash Flood Guidance: (Graphics Attached)

24 hours Outlook for the Flash Flood Risk (FFR) till 1130 IST of 14-09-2024:

Moderate to High flash flood risk likely over few watersheds & neighbourhoods of

Uttarakhand - Almora, Bageshwar, Chamoli, Champawat, Nanital, Pauri Garhwal, Pithoragarh, Rudrapur, Tehri Garwal, Udham Singh Nagar and Uttarkashi districts.

Himachal Pradesh- Shiomla, Sirmour districts

Surface runoff/ Inundation may occur at some fully saturated soils & low-lying areas over AoC as shown in map due to expected rainfall occurrence in next 24 hours.

This is last update in association with this system. However, regular weather bulletins will continue from National Weather Forecasting Centre and respective Regional Meteorological Centres and Meteorological Centres in association with the Well Marked Low Pressure Area over northwest Uttar Pradesh and neighbourhood.

Contact: Cyclone Warning Division, Office of the Director General of Meteorology, India Meteorological Department, Ministry of Earth Sciences, E-mail: cyclonewarningdivision@gmail.com, Website: rsmcnewdelhi.imd.gov.in, Spatial rainfall distribution: Isolated: <25%, A few: 26-50%, Many: 51-75%, Most: 76-100%, Rainfall amount (mm): Heavy rain: 64.5 – 115.5, Very heavy rain: 115.6 – 204.4, Extremely heavy rain: 204.5 or more.

(b) Well Marked Low Pressure Area over northeast Bay of Bengal and adjoining southeast Bangladesh coast

Under the influence of a cyclonic circulation over southeast Bangladesh and neighbourhood, a low pressure area formed over southeast Bangladesh and neighbourhood in the night of 12th September and lay over the same region in the early morning (0530 hours IST) of today, the 13th September, 2024. It moved west-northwestwards and lay as a well marked low pressure area over northeast Bay of Bengal and adjoining southeast Bangladesh coast in the morning (0830 hours IST) of today, the 13th September, 2024.

It is likely to continue to move west-northwestwards and intensify into a **Depression** over coastal West Bengal and adjoining northwest Bay of Bengal by tomorrow, the 14th September.

Warnings:

(i) Rainfall warning

Gangetic West Bengal: Light to moderate rainfall at most places is very likely with **heavy to very heavy rainfall** at few places and **extremely heavy rainfall** at isolated places on 14th; **heavy to very heavy rainfall** at isolated places on 13th and **heavy rainfall** at isolated places on 15th September.

Odisha: Light to moderate rainfall at most places is very likely with **heavy to very heavy rainfall** at few places and **extremely heavy rainfall** at isolated places on 14th and **heavy rainfall** at isolated places on 13th & 15th September.

Jharkhand: Light to moderate rainfall at most places with isolated **heavy rainfall** very likely on 13th and **heavy to very heavy rainfall** at isolated places on 14th & 15th September.

Bihar: Light to moderate rainfall at most places with **heavy rainfall** at isolated places very likely during 13th-15th September.

Chhattisgarh: Light to moderate rainfall at most places with isolated **heavy rainfall** on 14th & 15th September.

Mizoram & Tripura: Light to moderate rainfall at most places is very likely with **heavy to very heavy rainfall** at isolated places on 13th and isolated **heavy rainfall** during 14th - 15th September.

Assam & Meghalaya: Light to moderate rainfall at many places is very likely with isolated **heavy rainfall** is likely during 13th -15th September.

(ii) Flash Flood Guidance: (Graphics Attached)

24 hours Outlook for the Flash Flood Risk (FFR) till 1130 IST of 14-09-2024:

Low to Moderate flash flood risk likely over few watersheds & neighbourhoods of

Gangetic West Bengal – South and North 24 Paraganas, East Mednipur, Pashim Medipur, Haora, Hugli, Nadia and Bankura.

Mizoram & Tripura – Saiha, Lunglai, Serchip, Champai, Aizwal, Mamit and Lawngtai districts

Surface runoff/ Inundation may occur at some fully saturated soils & low-lying areas over AoC as shown in map due to expected rainfall occurrence in next 24 hours.

(iii) Wind warning:

Squally weather with strong wind speed reaching 30-40 kmph gusting to 50 kmph is likely to prevail over coastal areas of Bangladesh, West Bengal and adjoining north Bay of Bengal on 13th September. It is likely to increase gradually becoming squally wind speed reaching 40-50 kmph gusting to 60 kmph from 14th evening till 15th September.

Squally wind speed reaching 40-50 kmph gusting to 60 kmph over northwest Bay of Bengal and along & off West Bengal and Odisha coasts from 14th evening till 16th morning.

Contact: Cyclone Warning Division, Office of the Director General of Meteorology, India Meteorological Department, Ministry of Earth Sciences, E-mail: cyclonewarningdivision@gmail.com, Website: rsmcnewdelhi.imd.gov.in. Spatial rainfall distribution: Isolated: <25%, A few: 26-50%, Many: 51-75%, Most: 76-100%, Rainfall amount (mm): Heavy rain: 64.5 – 115.5, Very heavy rain: 115.6 – 204.4, Extremely heavy rain: 204.5 or more.

(iv) Sea Condition:

The Rough sea condition is very likely to prevail over north Bay of Bengal from 13th till 15th September.

(iv) Fishermen Warning:

Fishermen are advised not to venture into north Bay of Bengal till 15th September.

Impact Expected (Uttarakhand, Himachal Pradesh, Uttar Pradesh, Haryana, Gangetic West Bengal, Odisha, Jharkhand, Bihar, and Chhattisgarh due to heavy rainfall)

- ✓ Localized Flooding of roads, water logging in low lying areas and closure of underpasses mainly in urban areas of the above region.
- ✓ Occasional reduction in visibility due to heavy rainfall.
- ✓ Disruption of traffic in major cities and roadways due to water logging in roads leading to increased travel time.
- ✓ Minor damage to kutchha roads.
- ✓ Possibilities of damage to vulnerable structure.
- ✓ Localized Landslides/Mudslides/landslips/mud slips/land sinks/mud sinks.
- ✓ Damage to horticulture and standing crops in some areas due to inundation and wind.
- ✓ It may lead to riverine flooding in some river catchments (for riverine flooding please visit Web page of CWC)

Action Suggested (Uttarakhand, Himachal Pradesh, Uttar Pradesh, Haryana, Gangetic West Bengal, Odisha, Jharkhand, Bihar, and Chhattisgarh)

- ✓ Fishermen are advised not to venture into north Bay of Bengal from 13th to 15th September.
- ✓ Judicious regulation of surface transports including railways and roadways.
- ✓ Check for traffic congestion on your route before leaving for your destination.
- ✓ Follow any traffic advisories that are issued in this regard.
- ✓ Avoid going to areas that face the water logging problems often.
- ✓ Avoid staying in vulnerable structure.

Agromet advisories for Heavy Rainfall likely over various parts of the country

- ✓ Provide mechanical support to horticultural crops & staking to vegetables.
- ✓ Keep the harvested produce at safer place.
- ✓ Keep the harvested produce at safer place.

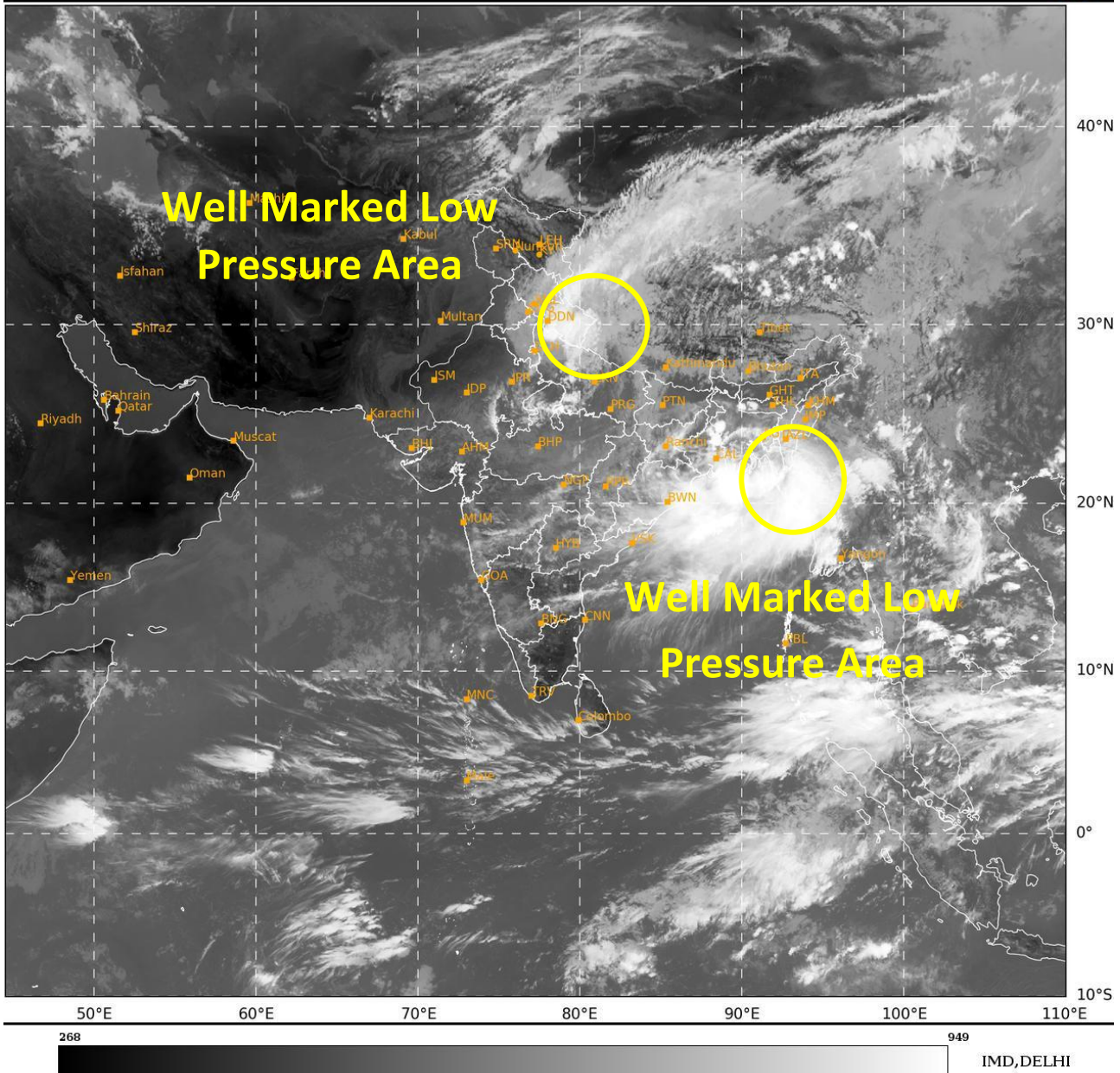
All associated graphics have been kept in Annexure-I. The 24 hours accumulated realised rainfall (≥ 7 cm) ending at 0830 hours IST of 13th September is kept in Annexure-II.

Next Press Release will be issued at 1430 hours IST of tomorrow, the 14th September, 2024.

Contact: Cyclone Warning Division, Office of the Director General of Meteorology, India Meteorological Department, Ministry of Earth Sciences, E-mail: cyclonewarningdivision@gmail.com, Website: rsmcnewdelhi.imd.gov.in. Spatial rainfall distribution: Isolated: <25%, A few: 26-50%, Many: 51-75%, Most: 76-100%, Rainfall amount (mm): Heavy rain: 64.5 – 115.5, Very heavy rain: 115.6 – 204.4, Extremely heavy rain: 204.5 or more.

SAT : INSAT-3DR IMG
IMG_TIR1 10.8 um
LIC Mercator

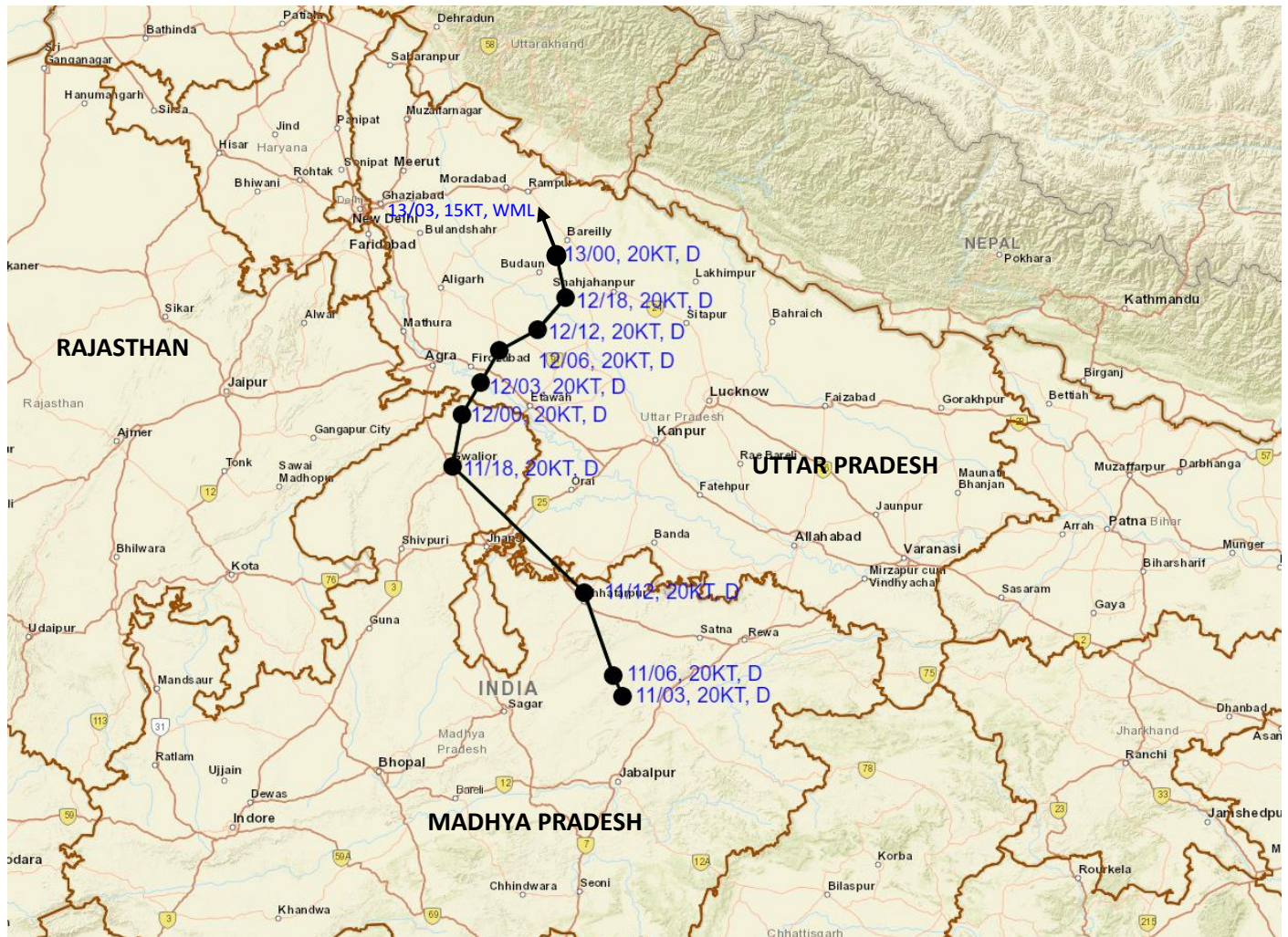
13-09-2024/(0615 to 0642) GMT
13-09-2024/(1145 to 1212) IST



Contact: Cyclone Warning Division, Office of the Director General of Meteorology, India Meteorological Department, Ministry of Earth Sciences, E-mail: cyclonewarningdivision@gmail.com, Website: rsmcnewdelhi.imd.gov.in. Spatial rainfall distribution: Isolated: <25%, A few: 26-50%, Many: 51-75%, Most: 76-100%, Rainfall amount (mm): Heavy rain: 64.5 – 115.5, Very heavy rain: 115.6 – 204.4, Extremely heavy rain: 204.5 or more.



OBSERVED TRACK OF LAND DEPRESSION OVER CENTRAL INDIA DURING 11TH – 13TH SEPTEMBER, 2024

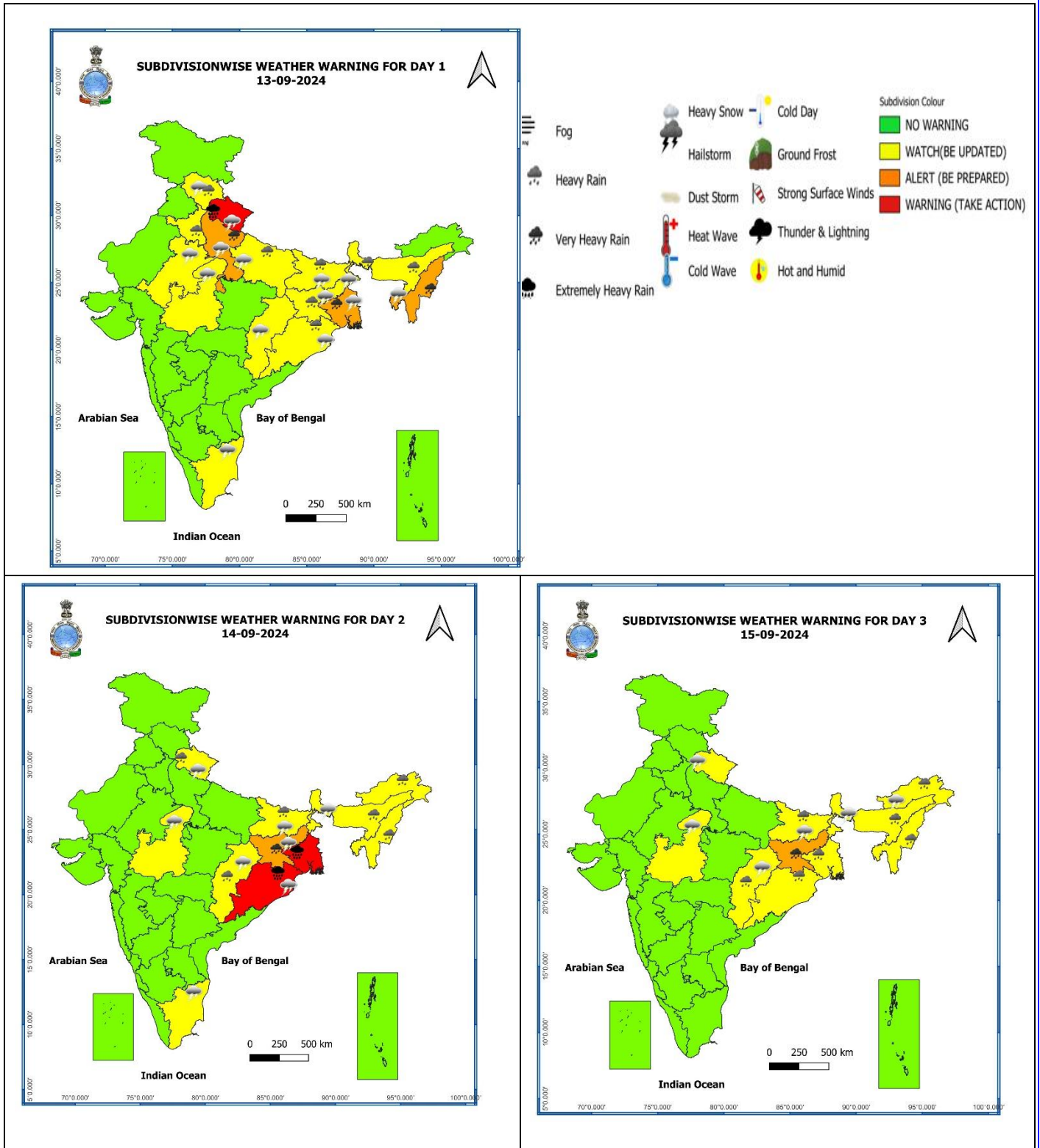


DATE/TIME IN UTC
IST=UTC + 0530
L: LOW PRESSURE AREA
WML: WELL MARKED LOW PRESSURE AREA
D: DEPRESSION (17-27 KT)
DD: DEEP DEPRESSION (28-33 KT)
CS: CYCLONIC STORM (34-47 KT)
SCS: SEVERE CYCLONIC STORM (48-63KT)
VSCS: VERY SEVERE CYCLONIC STORM (64-89 KT)
ESCS: EXTREMELY SEVERE CYCLONIC STORM (90-119 KT)
SuCS: SUPER CYCLONIC STORM (≥ 120 KT)

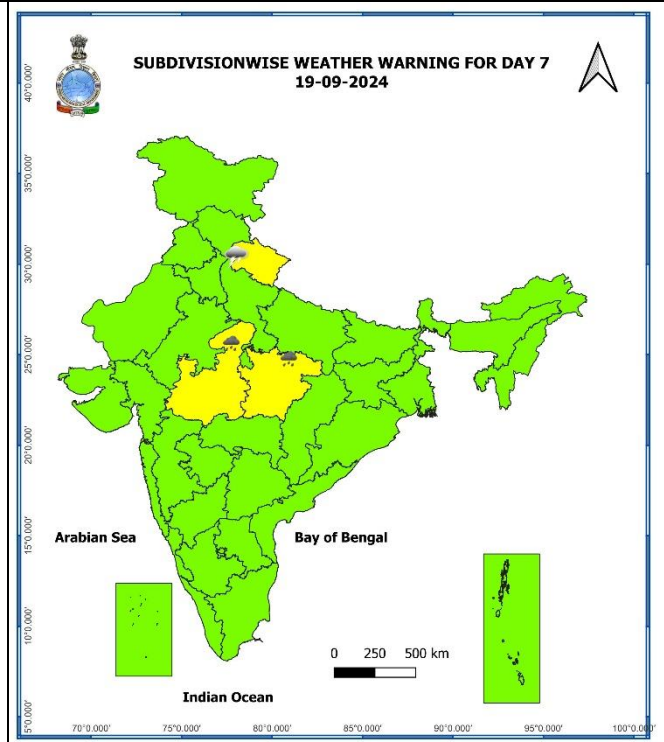
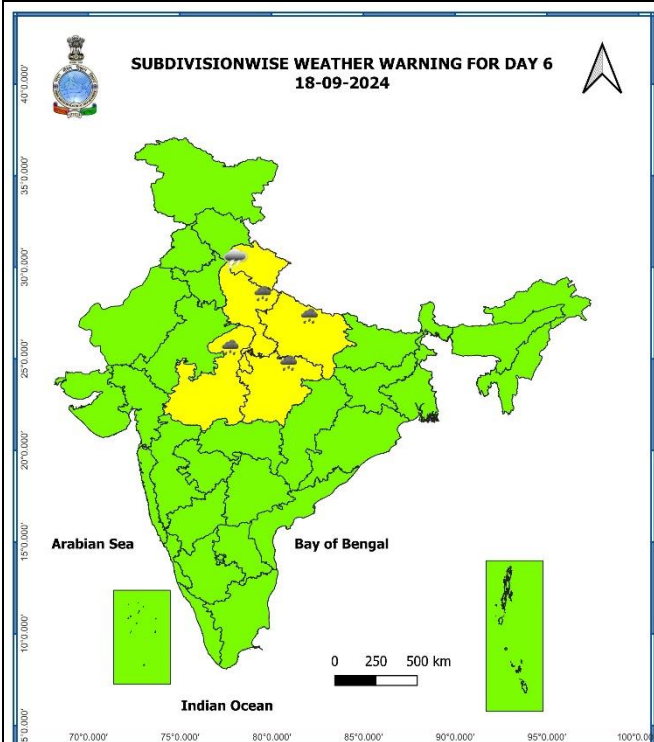
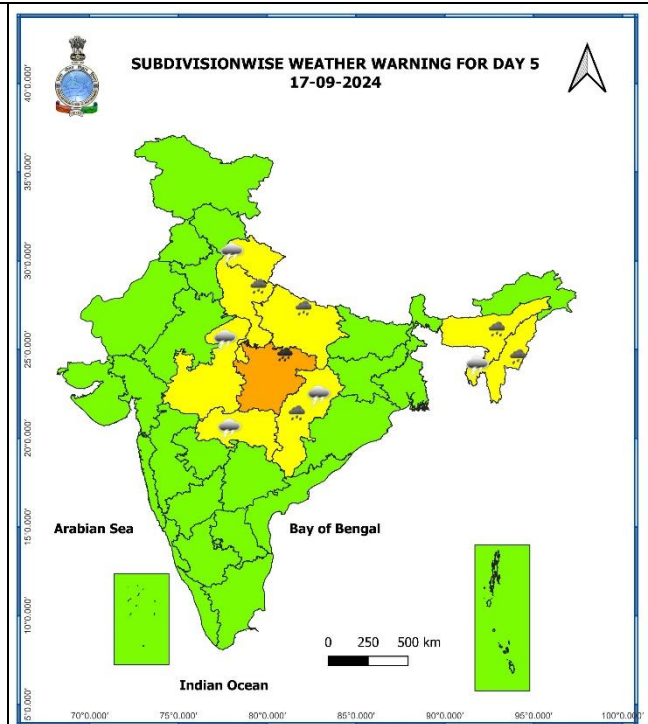
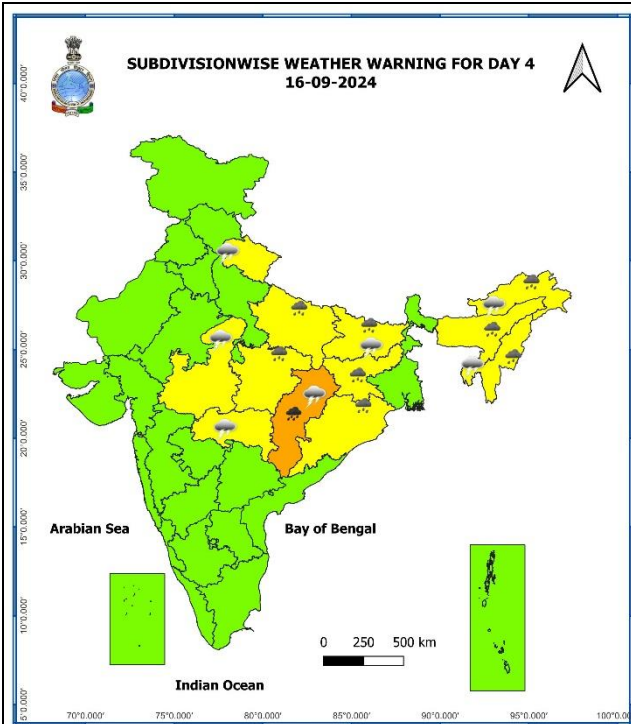
- LESS THAN 34 KT
- 34-47 KT
- ≥ 48 KT
- OBSERVED TRACK
- FORECAST TRACK
- CONE OF UNCERTAINTY

Contact: Cyclone Warning Division, Office of the Director General of Meteorology, India Meteorological Department, Ministry of Earth Sciences, E-mail: cyclonewarningdivision@gmail.com, Website: rsmcnewdelhi.imd.gov.in, Spatial rainfall distribution: Isolated: <25%, A few: 26-50%, Many: 51-75%, Most: 76-100%, Rainfall amount (mm): Heavy rain: 64.5 – 115.5, Very heavy rain: 115.6 – 204.4, Extremely heavy rain: 204.5 or more.

Warning Graphics



Contact: Cyclone Warning Division, Office of the Director General of Meteorology, India Meteorological Department, Ministry of Earth Sciences, E-mail: cyclonewarningdivision@gmail.com, Website: rsmcnewdelhi.imd.gov.in. Spatial rainfall distribution: Isolated: <25%, A few: 26-50%, Many: 51-75%, Most: 76-100%, Rainfall amount (mm): Heavy rain: 64.5 – 115.5, Very heavy rain: 115.6 – 204.4, Extremely heavy rain: 204.5 or more.



- Action may be taken based on **ORANGE AND RED** COLOUR warnings.
- Vulnerable regions likely urban and hilly areas action may be initiated for heavy rainfall warning.
- As the lead period increases forecast accuracy decreases

Contact: Cyclone Warning Division, Office of the Director General of Meteorology, India Meteorological Department, Ministry of Earth Sciences, E-mail: cyclonewarningdivision@gmail.com, Website: rsmcnewdelhi.imd.gov.in. Spatial rainfall distribution: Isolated: <25%, A few: 26-50%, Many: 51-75%, Most: 76-100%, Rainfall amount (mm): Heavy rain: 64.5 – 115.5, Very heavy rain: 115.6 – 204.4, Extremely heavy rain: 204.5 or more.

Flash Flood Guidance

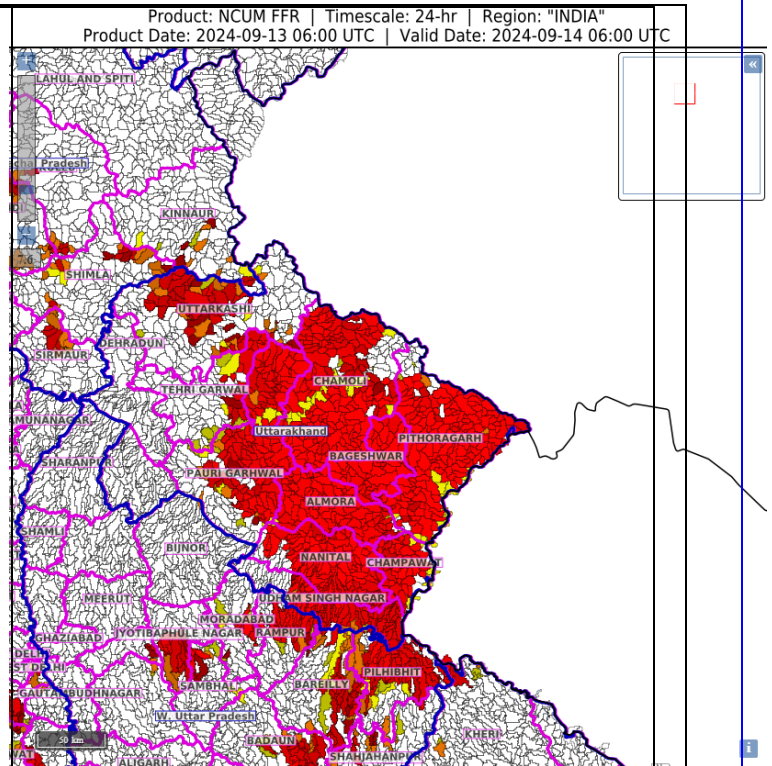
24 hours Outlook for the Flash Flood Risk (FFR) till 1130 IST of 14-09-2024:

Moderate to High flash flood risk likely over few watersheds & neighbourhoods of

Uttarakhand - Almora, Bageshwar, Chamoli, Champawat, Nanital, Pauri Garhwal, Pithoragarh, Rudraprayag, Tehri Garwal, Udham Singh Nagar and Uttarkashi districts.

Himachal Pradesh- Shiomla, Sirmour districts

Surface runoff/ Inundation may occur at some fully saturated soils & low-lying areas over AoC as shown in map due to expected rainfall occurrence in next 24 hours.



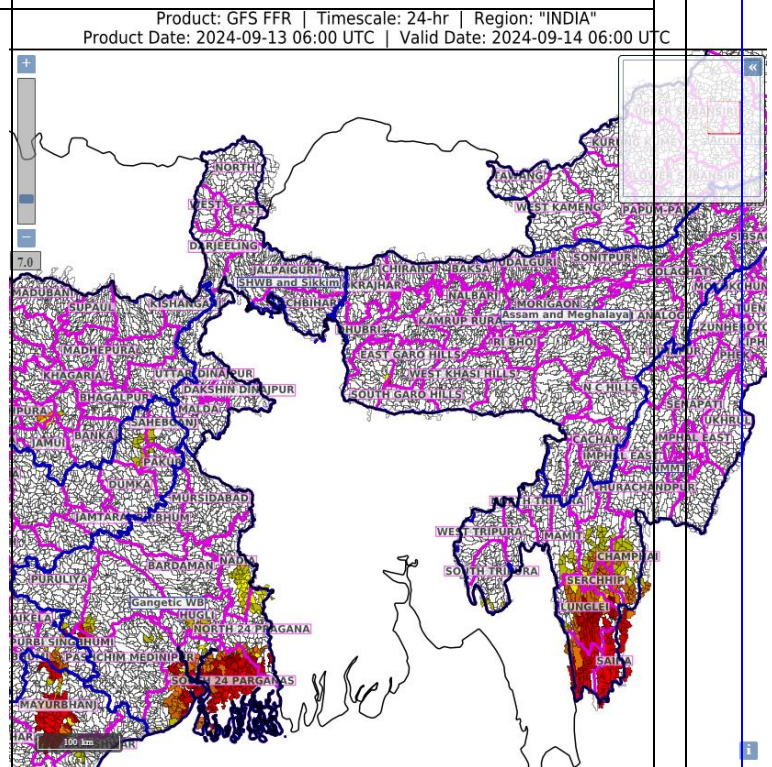
24 hours Outlook for the Flash Flood Risk (FFR) till 1130 IST of 14-09-2024:

Low to Moderate flash flood risk likely over few watersheds & neighbourhoods of

Gangetic West Bengal – South and North 24 Paraganas, East Mednipur, Pashim Medipur, Haora, Hugli, Nadia and Bankura.

Mizoram & Tripura – Saiha, Lunglei, Serchip, Champai, Aizwal, Mamit and Lawngtai districts

Surface runoff/ Inundation may occur at some fully saturated soils & low-lying areas over AoC as shown in map due to expected rainfall occurrence in next 24 hours.

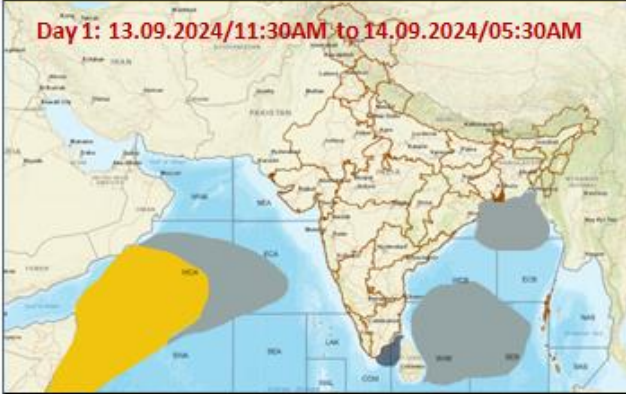


Contact: Cyclone Warning Division, Office of the Director General of Meteorology, India Meteorological Department, Ministry of Earth Sciences, E-mail: cyclonewarningdivision@gmail.com, Website: rsmcnewdelhi.imd.gov.in. Spatial rainfall distribution: Isolated: <25%, A few: 26-50%, Many: 51-75%, Most: 76-100%, Rainfall amount (mm): Heavy rain: 64.5 – 115.5, Very heavy rain: 115.6 – 204.4, Extremely heavy rain: 204.5 or more.



Fishermen Warning Graphics

Day 1: 13.09.2024/11:30AM to 14.09.2024/05:30AM



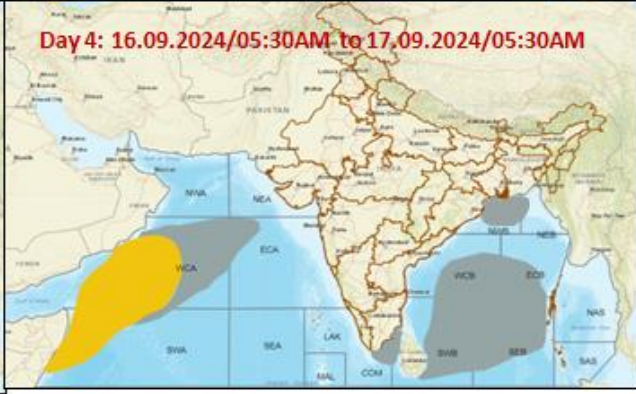
Day 2: 14.09.2024/05:30AM to 15.09.2024/05:30AM



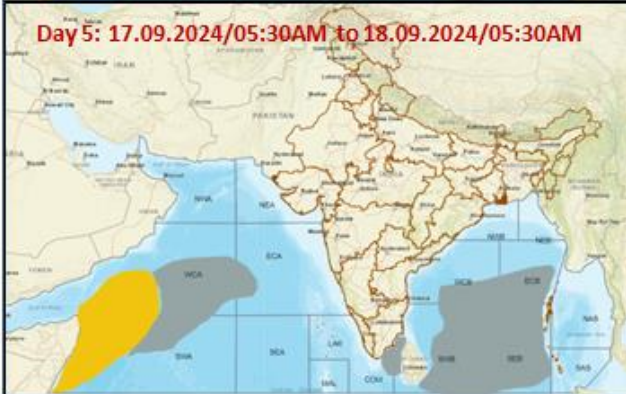
Day 3: 15.09.2024/05:30AM to 16.09.2024/05:30AM



Day 4: 16.09.2024/05:30AM to 17.09.2024/05:30AM



Day 5: 17.09.2024/05:30AM to 18.09.2024/05:30AM



Squally WX with wind speed 30-40 kmph gusting to 50 kmph

Squally WX with wind speed 45-55 kmph gusting to 65 kmph

Squally wind with speed 45-55 kmph gusting to 65 kmph

Fishermen are advised not to venture into the marked areas.

Contact: Cyclone Warning Division, Office of the Director General of Meteorology, India Meteorological Department, Ministry of Earth Sciences, E-mail: cyclonewarningdivision@gmail.com, Website: rsmcnewdelhi.imd.gov.in. Spatial rainfall distribution: Isolated: <25%, A few: 26-50%, Many: 51-75%, Most: 76-100%, Rainfall amount (mm): Heavy rain: 64.5 – 115.5, Very heavy rain: 115.6 – 204.4, Extremely heavy rain: 204.5 or more.

**Significant Rainfall recorded during past 24 hours till 0830 hours IST of today
13.09.2024 (in cm):**

- ❖ **Uttarakhand:** Lohaghat (Champawat): 26, Champawat (Champawat) : 20, Banbasa (Champawat) : 13, Khatima (Udham singh nagar) : 13, Kashipur (Udham singh nagar) : 11, Pithoragarh (Pithoragarh) : 11, Jaspur (Udham singh nagar) : 9, Mukteshwar (Nainital) : 9, Pantnagar (Udham singh nagar) : 9, Pati (Champawat) : 9, Haldwani (Nainital) : 9, Almora (Almora) : 8, Betalghat (Nainital) : 7, Ranikhet (Almora) : 7, Nainital (Nainital) : 7, Haridwar (Haridwar) : 7, Gairsain (Chamoli) : 7,
- ❖ **West Uttar Pradesh:** Bijnor (Bijnor) 18, Kasganj (Kasganj) 15, Sahawar (Kasganj) 15, Budaun (Badaun) 14, Mirganj (Bareilly) 13, Sahaswan (Badaun) 13, Pawayan (Shahjahanpur) 13, Baheri (Bareilly) 12, Nauganva Sadat (Amroha) 12, Sikandra Rao (Hathras) 11, Amroha (Amroha) 11, Moradabad Cwc (Moradabad) 11, Hasanpur (Amroha) 10, Dhampur (Bijnor) 10, Dataganj (Badaun) 10, Aligarh (Aligarh) 10, Bilari (Moradabad) 10, Moradabad (Moradabad) 9, Thakurdwara (Moradabad) 9, Kasba Tanda (Rampur) 9, Jansath (Muzaffarnagar) 9, Jasnana (Firozabad) 9, Nagina (Bijnor) 9, Moradabad Obsy (Moradabad) 9, Shahjahanpur Obsy (Shahjahanpur) 9, Bisauli (Badaun) 9, Narora (Bulandshahar) 8, Aonla (Bareilly) 8, Mawana (Meerut) 8, Nawabganj (Bareilly) 8, Aliganj (Etah) 8, Etawah (cwc) (Etawah) 8, Chandpur (Bijnor) 8, Bareilly Cwc (Bareilly) 8, Suar (Rampur) 8, Agra (cwc) (Agra) 7, Gunnaur (Sambhal) 7, Chandausi (Sambhal) 7, Pilibhit Tehsil (Pilibhit) 7, Shahjahanpur (t) (Shahjahanpur) 7, Tundla (Firozabad) 7, Bisalpur (Pilibhit) 7, Bareilly Pbo (Bareilly) 7,
- ❖ **East Uttar Pradesh:** Muhammadi (Kheri) 14, Ankinghat (Kanpur Dehat) 12, Nighasan (Kheri) 11, Neemsar (Sitapur) 11, Dhaurahara (Kheri) 11, Kaimganj (Farrukhabad) 11, Mahsi (Bahraich) 10, Katarniaghat (Bahraich) 10, Nanpara (Bahraich) 9, Hardoi Obsy (Hardoi) 9, Dabri Fmo (Farrukhabad) 8, Kheri Lakhimpur (Kheri) 7, Chhibramau (Kannauj) 7, Bahraich (Bahraich) 7, Shardanagar (Kheri) 7,
- ❖ **East Rajasthan:** Viratnagar Sr (Jaipur) 8, Asnawar Sr (Jhalawar) 8, Bharatpur Tehsil Sr (Bharatpur) 7, Shahabad (Baran) 7,
- ❖ **Haryana-Chandigarh-Delhi:** Hassanpur (Palwal) 7, Delhi Ridge (North Delhi) 7,
- ❖ **West Madhya Pradesh:** Ambah (Morena) 7, Karhal (Sheopur) 7, Porsa (Morena) 7,
- ❖ **Bihar:** Barauni (Begusarai) 7,